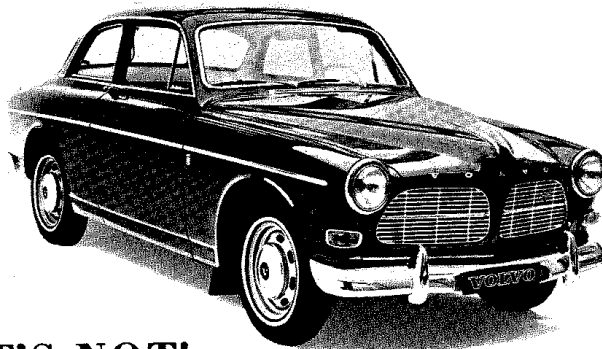


This Looks Like A Volvo Canadian Doesn't It?



WELL IT'S NOT!

You just looked at the fabulous new Volvo 123GT, the newest addition to the Volvo model line-up. From the outside it resembles a standard Volvo Canadian, but believe us when we tell you its not. Just wait 'till you drive it—this one is a real performer, and its loaded with all kinds of extra equipment.

FOLLOWING IS A LIST OF SPECIAL EQUIPMENT WHICH IS STANDARD ON THE GT

- 115 h.p. engine
- Alternator
- M-41 transmission with electrically-operated overdrive
- Limited-slip differential
- Radial ply tires
- H.D. shock absorbers
- G.T. steering wheel
- Tachometer
- Fully reclining front seats
- Built-in dash tray

Specifications, The Volvo 123 GT Series

Model 13395

Two-door 115 b.h.p., four-speed transmission with overdrive

Engine

Type B 18. Four-cylinder with overhead valves and five-bearing crankshaft.

Capacity 109 cu. in. (1.78 litres)
Bore 3.313 in. (84.14 mm)
Stroke 3.15 in. (80.00 mm)

115 b.h.p. engine

Two horizontal carburetors

Maximum output 115 b.h.p. SAE at 6,000 r.p.m.

Maximum torque 112 lb. ft. SAE at 4,000 r.p.m.

Compression ratio 10.0:1

COOLING SYSTEM

Sealed. Water cooling with pump and thermostat. Capacity approx. 1½ gallons. Anti-freeze installed at factory.

ELECTRICAL SYSTEM

Voltage 12 V
Battery capacity 60 amp. hrs.
Generator output max. 360 W
Starter motor output 1 h.p.

CLUTCH

Diaphragm spring type.

TRANSMISSION

Four-speed, fully synchronized with floor-mounted gear lever and electrically operated overdrive.

Ratios

1st	3.13:1
2nd	1.99:1
3rd	1.36:1
4th	1.00:1
Overdrive	0.756:1
Reverse	3.25:1

Rear axle. Hypoid type. Ratio: 4.56:1 with limited-slip differential.

CHASSIS

Steering gear

Cam and roller type.
Turning circle:
Between curbs 31' 2"
Between walls 33' 2"

Front suspension

Independent front wheel suspension in rubber-journalled control arms. Steering knuckles carried in ball joints. Coil springs. Stabilizer.

Rear suspension

Rigid rear axle carried in longitudinal rubber-journalled support arms and torque rods. The axle is located transversely by means of a rubber-journalled track rod. Coil springs.

Shock Absorbers

H.D. telescopic shock absorbers front and rear.

Brake system

Front: Self-adjusting disc brakes.
Rear: Self-centering drum brakes. (Drum diameter 9 in.)

A relief valve in the brake system prevents the rear wheels from locking in the case of emergency braking.

All vehicles fitted with a brake servo system.

BODY

Unit construction, all-welded steel body, completely rust-proofed and treated with underbody sealing. Stiffening closed box profiles fitted around all body openings.

Fuel tank

Located at rear. Capacity approx. 10 gallons.

Instrumentation

Speedometer, tachometer, fuel and water temperature gauges, odometer and tripmeter. Warning lamps for charging, oil pressure, full headlights and directional signals.

Equipment

Automatic back-up lights. Continuously variable instrument lighting. Map-reading light. Fully reclining front seats. Three-point, factory-installed safety belts on front seats. Laminated windshield. Two-speed electric windshield wipers. Windshield washer. Thermostat-controlled heater system with large capacity, two-speed fan and warm air duct to rear seat. Dazzle-free rearview mirror. Outside mirror. Four-way emergency flashers. Cigarette lighter. Spare wheel. Jack. Tools.

MAIN DIMENSIONS AND WEIGHTS

Wheelbase, in.	102½
Track, front, in.	51½
Track, rear, in.	51½
Overall length, in.	175
Overall width, in.	63½
Overall height, unladen, in.	59½
Curb weight, lbs. (approx.)	2,515

The factory reserves the right to modify price and equipment without previous notice.

You are cordially invited to our Dealership for an exciting demonstration drive.



568 E